

ScotEID Desktop Quick Start Guide

Last updated 16/01/2013

Table of Contents

[Table of Contents](#)

[Supported Readers](#)

[Installation](#)

[Java Runtime Environment](#)

[ScotEID Desktop](#)

[Configuration](#)

[General](#)

[Default Lot](#)

[ScotEID Login Details](#)

[Miscellaneous](#)

[Readers](#)

[Identifying your COM port](#)

[Windows 2000 and XP](#)

[Windows Vista and Windows 7](#)

[Plugins](#)

[UI Settings](#)

[Reading Data](#)

[Reading Live Data](#)

[Reading Stored Data](#)

[Clearing Stored Data](#)

[Uploading to ScotEID](#)

[Uploading incomplete lots](#)

[Uploading completed lots](#)

[Exporting to Excel](#)

[Troubleshooting](#)

Supported Readers

The table below lists readers currently supported by ScotEID Desktop. Generally any reader which can output data in the standard ISO format will work. Some readers may require a special configuration which is noted in the table.

Make	Model	Live data	Stored data	Remarks
Agrident	AWR100	YES	YES	
Aleis	8000/900 Series	YES	YES	
Allflex	RS320	YES	YES	
BioControl	HHR3000 Pro	YES	YES	Requires a specific application to be installed on the reader for stored data - contact support@scoteid.com
Gallagher	SmartReader BR series	YES	YES	
RoyalTag	I-Read	NO	YES	
NEDAP	Live!D Race Reader	YES	NO	
NEDAP	V-Scan	NO	YES	Requires a specific template to be loaded onto the reader - contact support@scoteid.com
Tag-ie	Tag-ie	NO	YES	
Tagmaster	Race Reader	YES	NO	
Tagreader	Race Reader	YES	NO	
TruTest	XRS	YES	YES	
NEDAP	V-Scan	YES	YES ¹	
Generic	ISO24631 or 16 character hex	YES	NO	Any reader which can be configured to output 16 characters hex or ISO24631 decimal formats can be used to read live data

Installation

To run the ScotEID Desktop application you will need to do the following, which are covered in further detail below.

1. Install the Java Runtime Environment
2. Install the ScotEID Desktop application
3. If you are using a reader which requires a USB-serial adapter (shown below, this includes most readers except the I-Read), you will need to install the drivers.

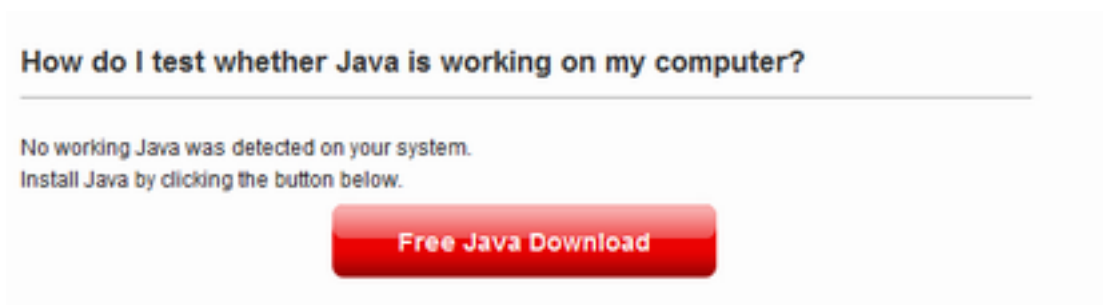
Java Runtime Environment

This software requires version 6 or greater of the Java Runtime Environment to be installed. If you are unsure whether you have this installed, you can check by clicking on the link below. Once the page loads, click "Verify Java Version".

<http://www.java.com/en/download/installed.jsp>



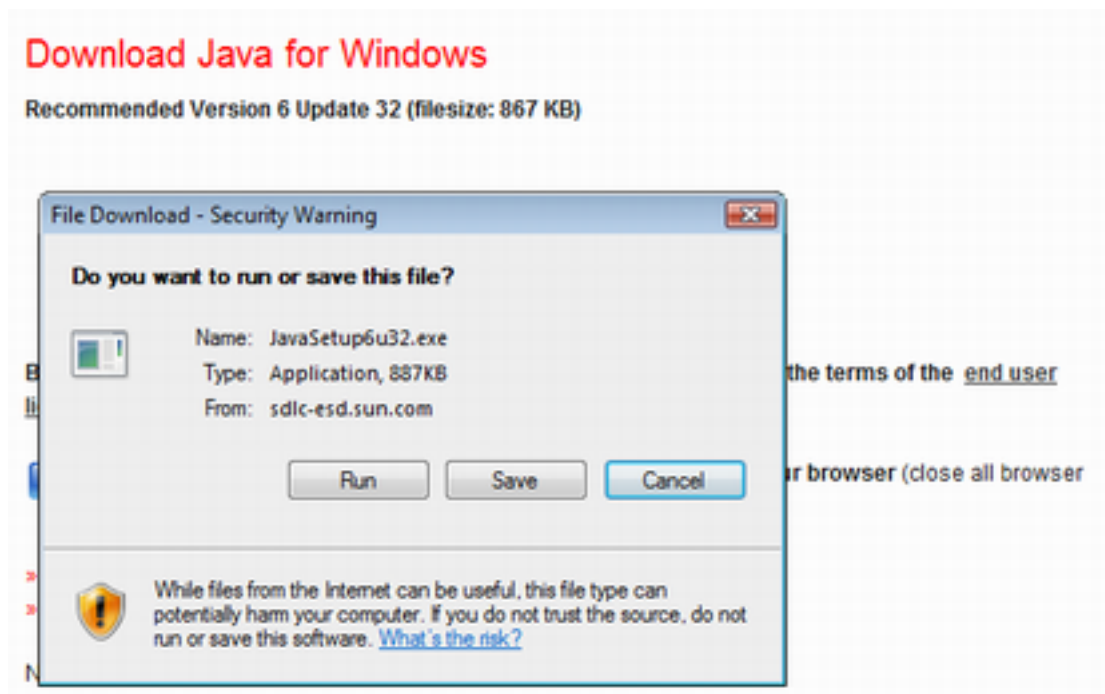
If Java is not found on your system, you will see a screen like this:



Click the "Free Java Download" button.



Click “Agree and Start Free Download”.



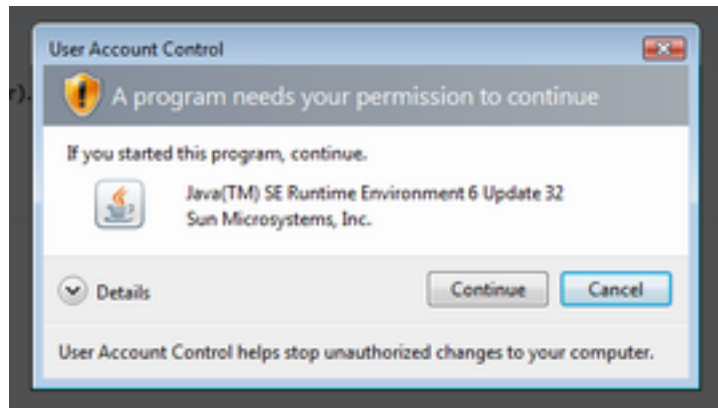
Click “Run” – note that if you are using a browser other than Internet Explorer, you may see a variation on this message.

ScotEID Desktop

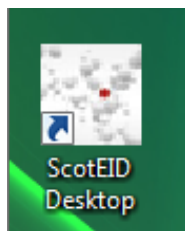
Once Java is installed, the latest version of ScotEID Desktop can be downloaded from:

http://www.scoteid.com/Public/Software/ScotEID_Desktop-install.jar

When prompted, choose to “Open” or “Run” the file. If you are running Windows Vista or Windows 7 you may also have to grant permission to modify your system by clicking “Continue” or “Allow”.

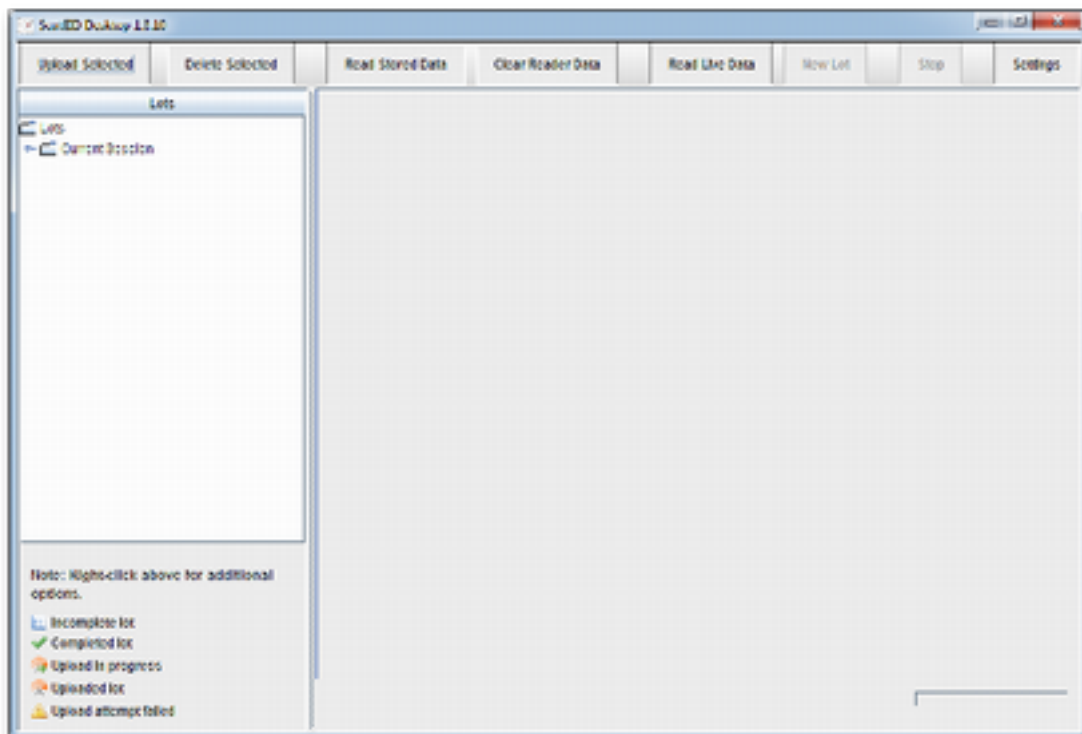


The installer will ask you where you would like to create shortcuts, if you accept the defaults a shortcut labelled "ScotEID Desktop" will be placed on your desktop.

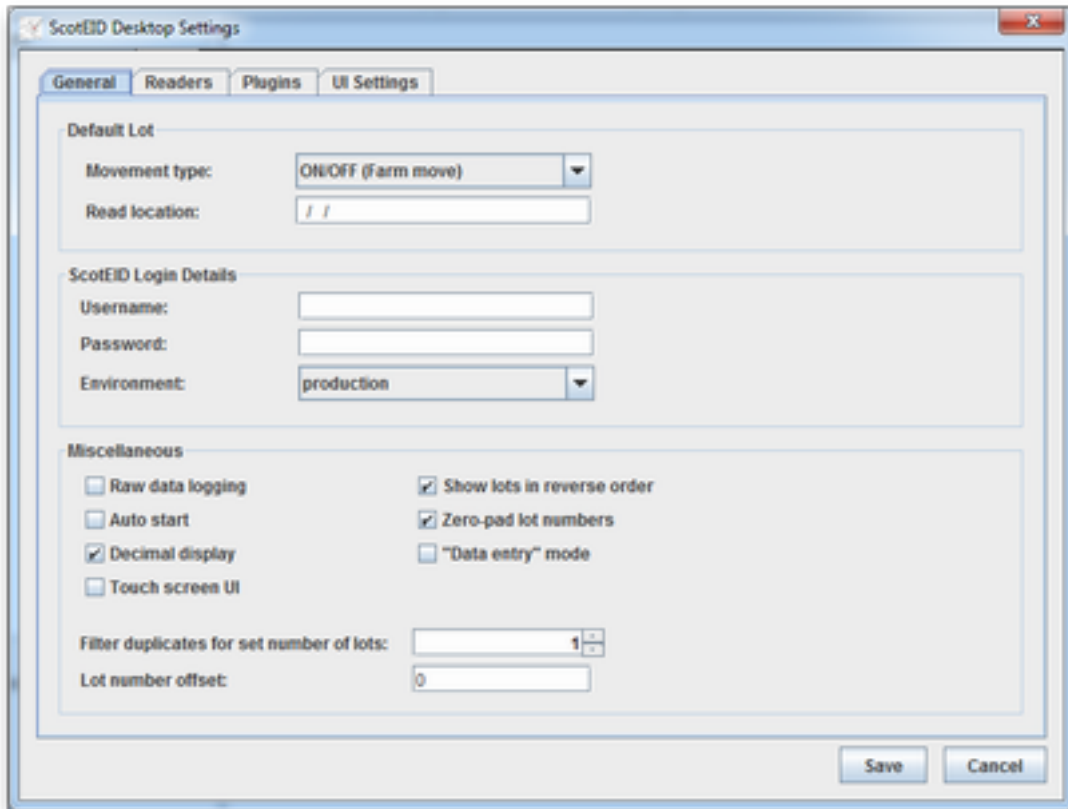


Configuration

Run the application via your desktop shortcut. To begin configuring the software for first use, click on the Settings button on the toolbar.



General



Default Lot

The default lot allows you to specify defaults for every lot that you download from your EID reader. Usually you should put your main CPH number in the read location field so that you don't need to enter it for every lot you read.

ScotEID Login Details

You may (optionally) enter your login details for ScotEID so that you don't need to enter it every time you upload data to ScotEID. Environment should always be set to "production" unless otherwise advised by ScotEID.

If you don't have a username and password yet you can register at <http://www.scoteid.com/register>

Miscellaneous

Brief descriptions and recommended settings for each of the "Miscellaneous" options:

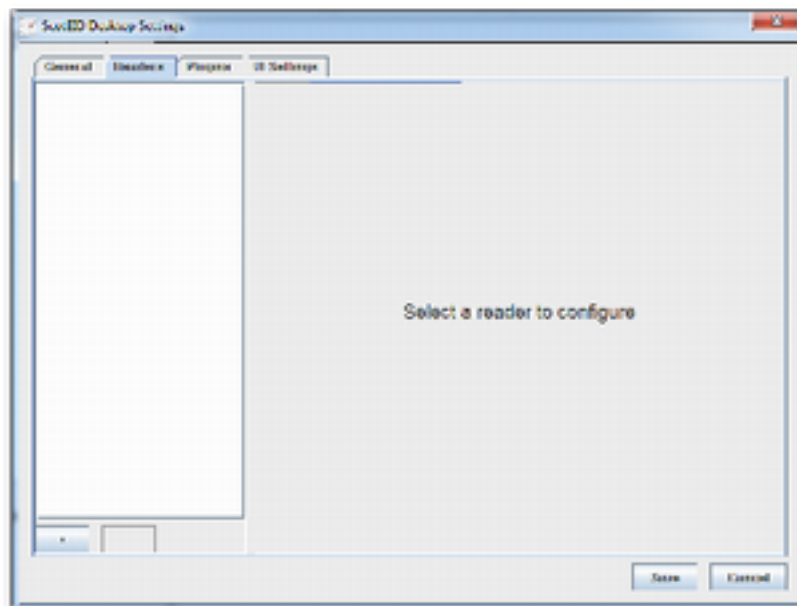
Setting name	Recommended	Description
Raw data logging	OFF	Logs a variety of raw data – for experimental use
Auto start	OFF	Automatically start reading live data on launch. This is intended for computers which will be running unattended.
Decimal display	ON	Display WYSIWYG tag numbers

Touch screen UI	OFF	Adds touch screen helper features to some user interface elements – e.g. popup keyboard on some inputs
Show lots in reverse order		Shows the most recently created lot at the top of the tree on the left hand side
Zero pad lot numbers		Create lot numbers of the form 0001,0002 etc rather than 1,2
Data entry mode	DISABLED	CCP use only
Filter duplicates for set number of lots	1	The number of lots for which a tag should be ignored if it appears a second time
Lot number offset	0	Start lot numbers at this offset each day – generally for CCP use only

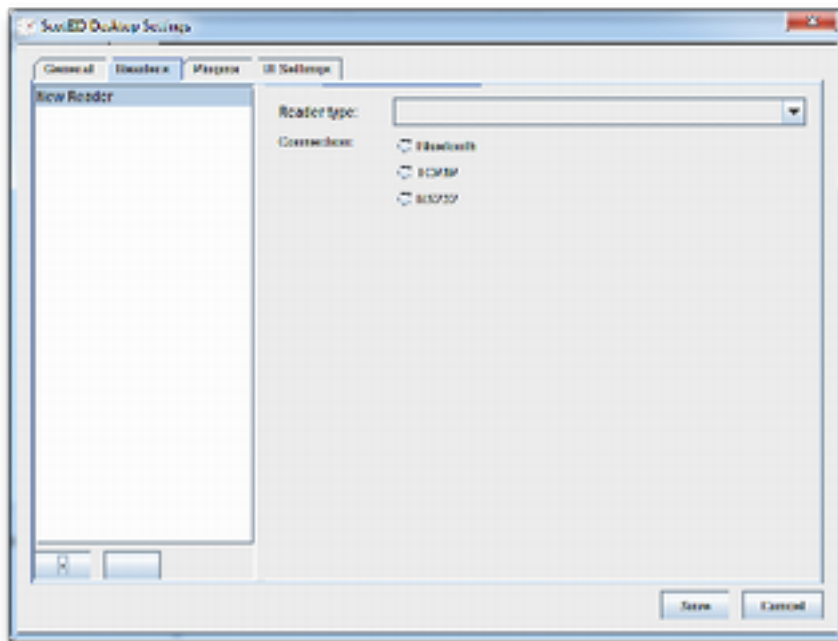
Readers

In the readers section you must configure the EID reader you will be using. Unless you are configuring use with a race reader you should only have one reader in the list on the left hand side.

The first time you look at the readers section, there will be no readers listed in the white box on the left hand side. Click on the + button at the bottom left to add one.

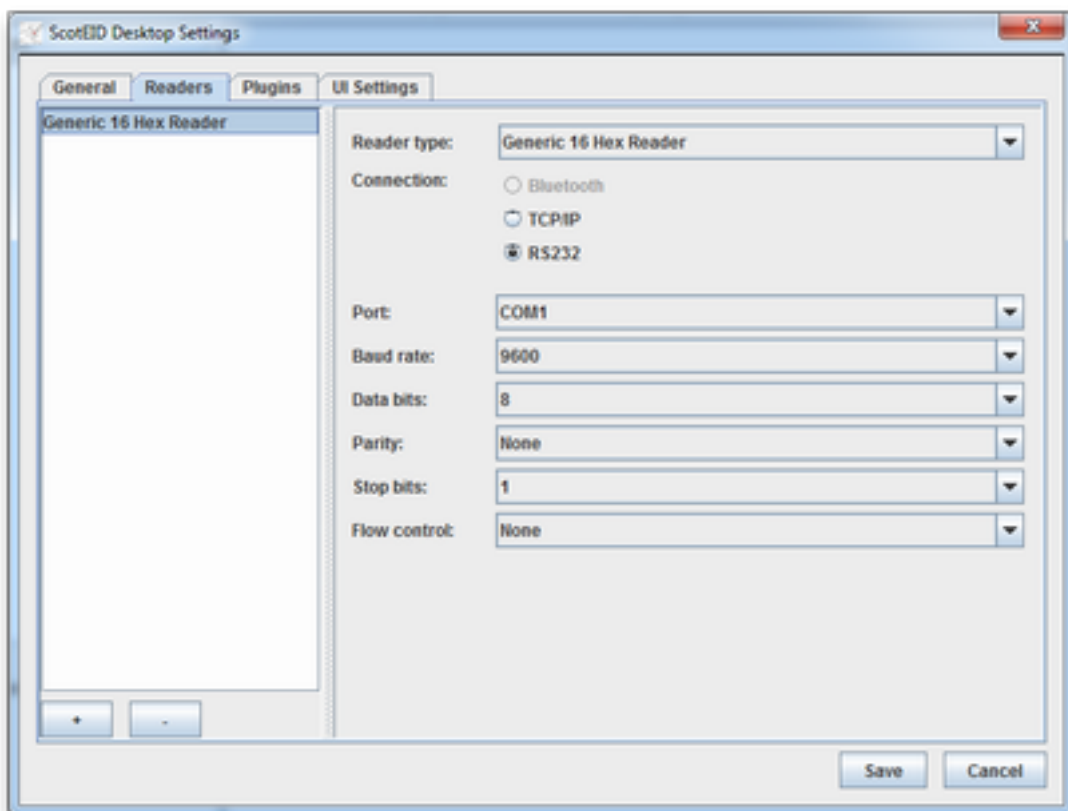


The reader you have just added will be selected automatically, and you should pick your type of reader from the drop down box. See [Supported Readers](#) for a list of compatible readers.



Once you have selected your reader type you need to specify the type of connection it uses. For most handheld readers, RS232 is the recommended choice. In most cases you will only need to select the COM port that the reader is connected to. The optimal RS232 settings for your reader type will automatically be selected.

If you are unsure which COM port to select, refer to "[Identifying your COM port](#)" below.



Identifying your COM port

Windows 2000 and XP

1. Right click “My Computer” on your Desktop, and click on “Properties”.
2. Select the “Device Manager” tab.
3. Expand the “Ports (COM & LPT)” list by clicking on the + icon
4. If only one COM port is listed here, this is the one you should use - otherwise you may need to use an element of trial and error to locate the correct port.

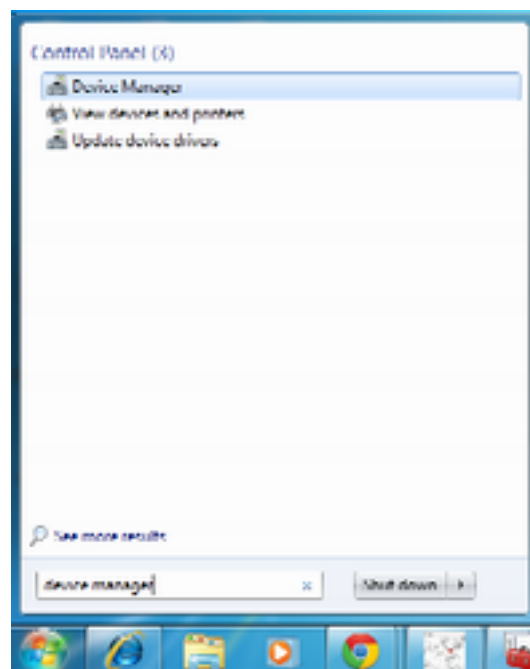
If you are using a USB to RS232 adapter it may show up as “Prolific” or “FTDI” which are the most commonly used chipsets.

You may also be able to identify the port by checking device manager with the USB cable unplugged, and then again with the cable plugged in.

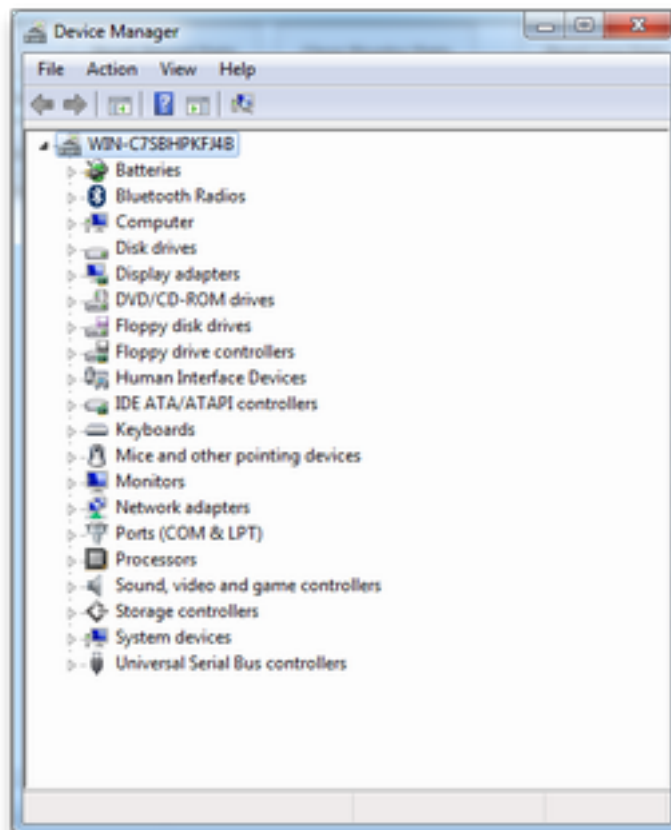
A USB to Serial cable will also usually have the highest COM port number.

Windows Vista and Windows 7

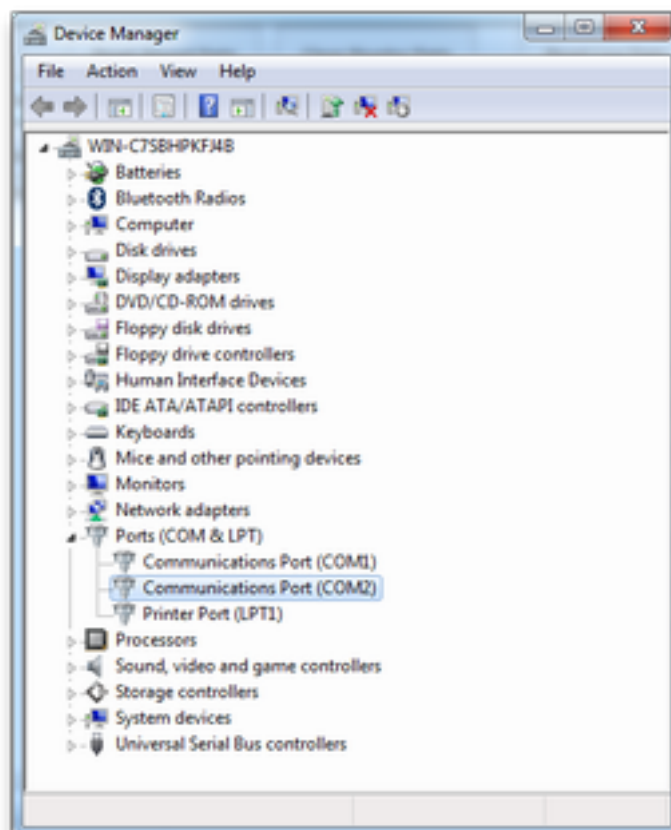
1. Click on the start icon
2. In the text box labelled “Start Search”, type “Device Manager”



3. From the results – click on Device Manager



4. Expand "Ports COM & LPT" ports by clicking on the arrow next to it



5. If only one COM port is listed here, this is the one you should use - otherwise you may need to use an element of trial and error to locate the correct port.

If you are using a USB to RS232 adapter it may show up as “Prolific” or “FTDI” which are the most commonly used chipsets.

You may also be able to identify the port by checking device manager with the USB cable unplugged, and then again with the cable plugged in.

A USB to Serial cable will also usually have the highest COM port number.

Plugins

The existing plugins have been developed for CCP use so aren't documented here, but if you have a specific query or feature request please contact support@scoteid.com.

UI Settings

Under the UI settings you can select which user interface elements you would like to be visible. You can also specify that any of the toolbar buttons require a password to be entered (specified in the UI password field). This is mostly used in CCP situations where you would like to stop the usual operator from being able to do certain things, e.g. delete lots.

Reading Data

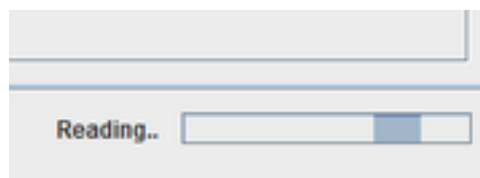
The software supports two methods of operation. Reading tags while the reader is physically plugged into the computer is referred to as “Reading Live Data”, while transferring data collected using the reader while disconnected is referred to as “Reading Stored Data”.

Not all readers support both modes of operation – refer to [“Supported Readers”](#) for more information.

Reading Live Data

Click “Read Live Data” in the toolbar at the top of the window.

Once the reader has connected successfully you will see a moving progress indicator in the bottom left hand side of the screen.

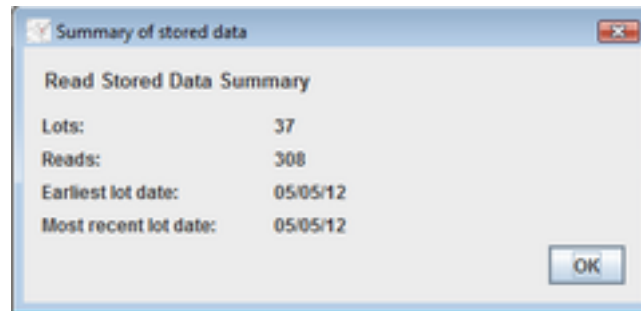


Reading Stored Data

To download data from the memory of your reader:

1. Click “Read Stored Data” on the toolbar

2. Wait while the reader downloads data, at the end you will be presented with a summary showing the number of lots and number of reads downloaded.



Clearing Stored Data

Once you have successfully downloaded data using “Read Stored Data” you may want to erase that data from the memory of your stick reader.

On most readers, this can be done by clicking “Clear Stored Data” on the toolbar.

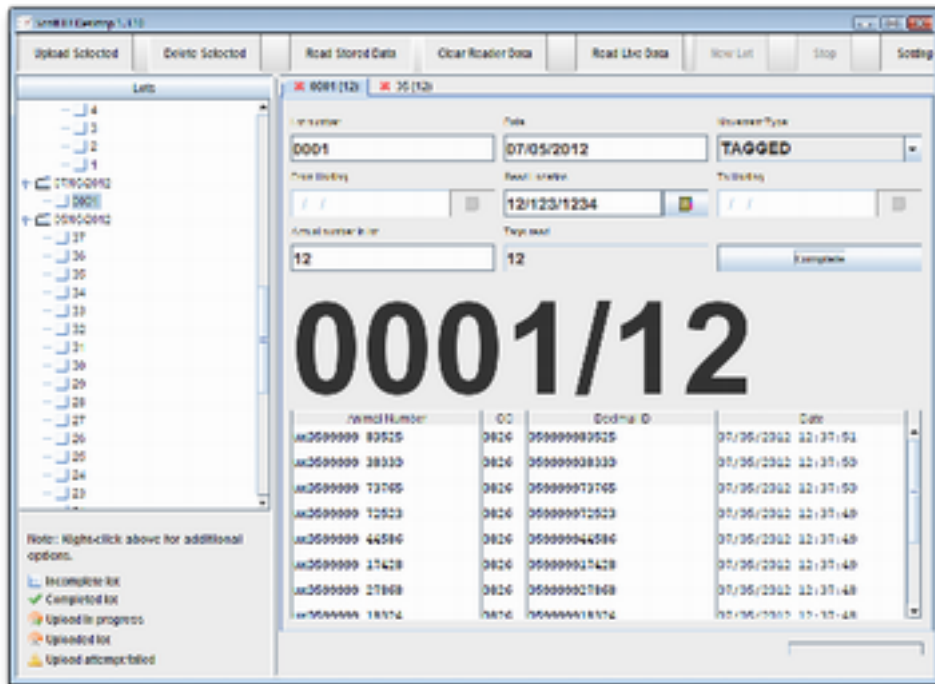
Note that this is usually irreversible. You should only clear the data once you have successfully uploaded data to ScotEID or exported the data in some other fashion.

Some readers may not support clearing stored data via the software – in this case you should refer to the manual supplied by your reader manufacturer.

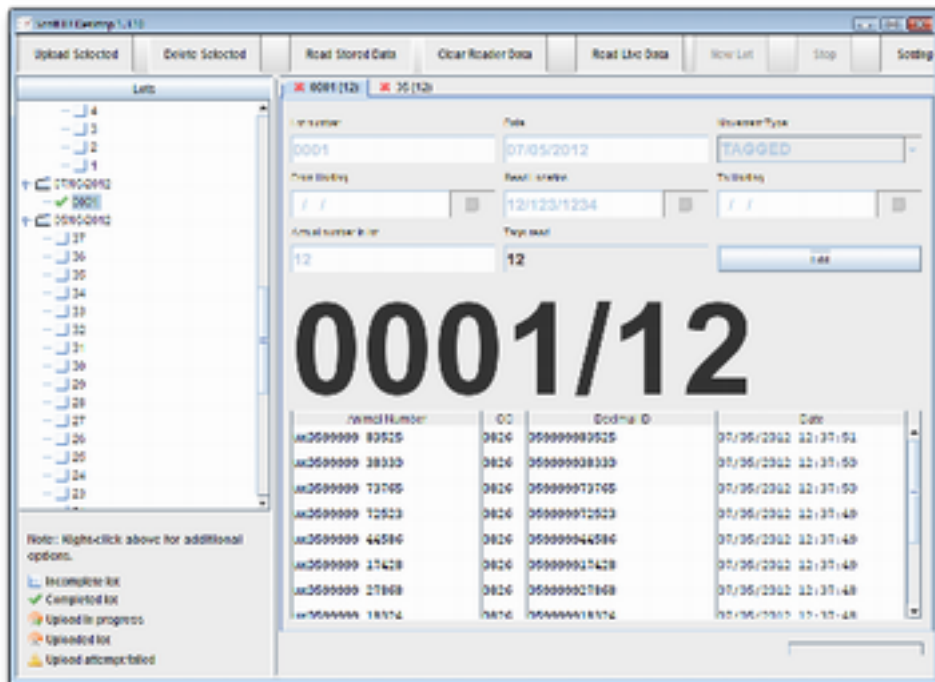
Uploading to ScotEID

There are two ways to upload data to ScotEID, either as **complete** or **incomplete** lots.

Completed lots must have all of the movement details filled out, e.g. departure CPH, read location CPH, destination CPH, head count. Once you have filled in all of the required fields click on the “Complete” button.



If the lot is completed successfully, a green tick will be placed next to it on the list of lots and the complete button will change to “Edit”. **Note that the lot has not been uploaded to ScotEID at this point – see “[Uploading completed lots](#)” for more information.**

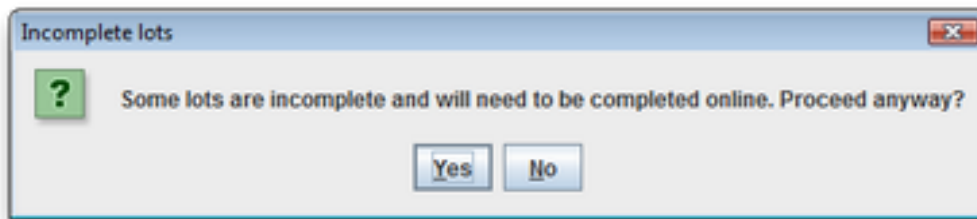


Alternatively if you do not have the movement details to hand you can upload them to ScotEID as incomplete lots and complete the movement details later via www.scoteid.com

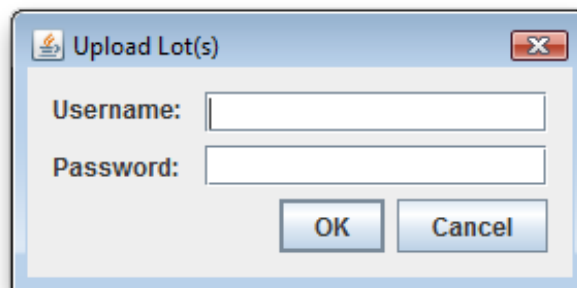
Uploading incomplete lots

1. Select the date or individual lots you want to upload from the list on the left hand side – note that you can hold down control and click one at a time to select multiple.
2. Click “Upload Selected Lots” on the toolbar

3. Click “Yes” to accept the warning about incomplete lots



4. If necessary enter your username and password before clicking “OK”.



5. Browse to http://www.scoteid.com/scoteid/incomplete_lots – the lots you have just uploaded should be listed here.

Uploading completed lots

1. Select the date or individual lots you want to upload from the list on the left hand side – note that you can hold down control and click on one at a time to select multiple lots. Make sure that all of the lots here should have a green tick beside them indicating that you have filled in the relevant movement details and clicked “Complete” on the lot information panel.
2. Click “Upload Selected Lots”
3. Ensure that you do not receive a warning about incomplete lots – if you do, click on “No” and double check that all of your lots have been marked as complete before continuing.
4. If necessary enter your username and password before clicking “OK”.
5. Browse to http://www.scoteid.com/scoteid/holding_register and verify that the lots you have just uploaded are shown on your holding register.

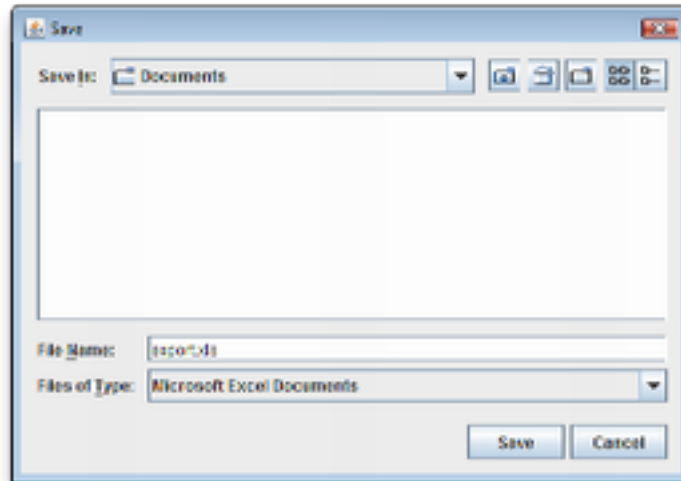
Exporting to Excel

If you would like to take a copy of the data for input into other software or printing, lots can be exported to a spreadsheet which can be opened in Excel, OpenOffice, etc.

Select the lots you would like to export from the list on the left hand. You can either select a single date, or hold control and left click to select multiple lots. Once selected, right click and choose “Export selected lots” from the popup menu.



You will then be prompted to enter a filename:



The new file can then be opened in Excel or imported into some farm management software.

Troubleshooting

Problem	Possible solution(s)
"Failed to connect to reader"	<ol style="list-style-type: none"><li data-bbox="858 1330 1430 1388">1. Ensure that the reader has not switched itself off<li data-bbox="858 1393 1430 1451">2. Check that the correct COM port has been selected in the software settings<li data-bbox="858 1456 1430 1514">3. Check that all cables are correctly plugged/screwed in